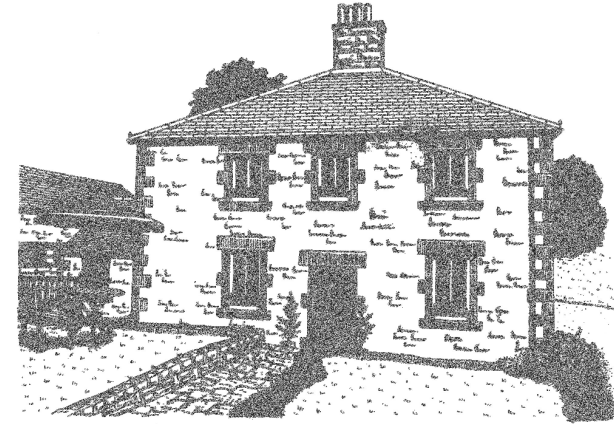


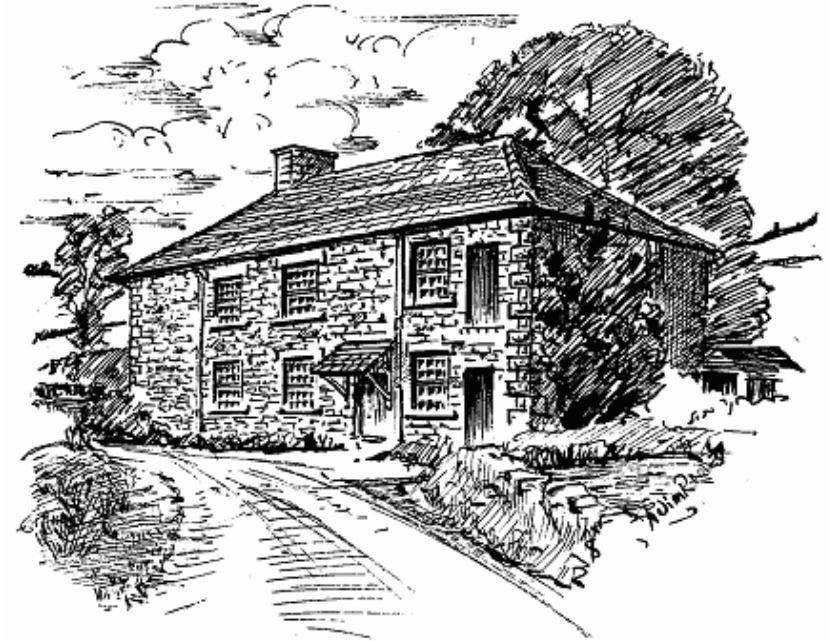
From Elton, 1.0 Miles. With the church on your RHS and pub on your LHS, go straight out of Elton. Ignore the right turn to Alport. Go straight on steeply down, past Dale End (telephone box) then 300 yards to the junction.

From Youlgreave, 2.0 Miles. By the church, go down Bradford Road. After crossing the River Bradford go steeply up and over Mawstone Lane. After the hairpin bend, go steeply down to the junction.

From Middleton by Youlgreave, 1.8 Miles. Leave the "Square" with the War Memorial Gardens and Play Park on your RHS and then the small church (not the old chapel) on your LHS. Past 2 farms at Smerrill. Up and then steeply down to the junction.



The Manager's House 2003



The Cheese Factory circa 1975

**SELF CATERING / B&B
HOLIDAY ACCOMMODATION**

THE MANAGER'S HOUSE

The Cheese Factory, Gratton, Near Bakewell
Between Elton and Youlgreave

2 Bedrooms Sleeps 4

- Peak District National Park
- Very rural location
- Excellent walking and cycling area
- "Clear View" wood stove
- Covered off-road parking
- Visit Britain **4 Star** Grading



"The house is lovely – probably the best we have stayed in – and very well equipped."

Family Arnold, Perthshire

Background. In 1885 the Stanton in Peak estate built The Cheese Factory at Gratton, to be run on a co-operative basis by the local dairy farmers. The building included a 2 bedroomed house for the manager and his family. The factory produced white Stilton until the end of the Second World War when this became uneconomic. The Cheese Factory has now been converted into a home, with the Manager's House as a guest annexe.

Lettings. The Manager's House is let primarily as self-catering holiday accommodation by the week or for short breaks. When not let for self-catering, it may be available for bed and breakfast. (Long lets (B&B or S-C) may also be available.) The house is **No smoking.**

Description. The Manager's House is a substantial gritstone house with its own entrance and south-facing garden. It has a spacious country kitchen including an oil fired Stanley range and a dining table. There is a comfortable sitting room with a welcoming Clearview wood stove. Also on the ground floor are a utility room and a bathroom having a shower-bath, a wash basin and a toilet. Upstairs are two bedrooms both of a good size, one with a 6 foot double bed, the second with two single beds. Both rooms have views over the garden and fields to the hamlet of Dale End. Nearby Gratton Dale is managed by English Nature especially to encourage the growth of wild flowers including orchids in season. Gratton is very picturesque with some excellent local walking and cycling and is close to the Limestone Way and the High Peak Trail. Chatsworth House and Haddon Hall are also nearby.

Services. Duvets, linen and towels. Oil fired Stanley range provides cooking, central heating and hot water. Electric oven, hob and microwave. Fridge-freezer, washing machine, tumble dryer, dishwasher, Satellite TV (14 x Free to Air plus digital radio), video, DVD, radio / cd player, **WiFi Broadband.** Electricity and oil included. Logs provided. Cot, high chair and stair gates by arrangement. Garage. External lighting. Garden furniture. Secure storage for bicycles. Barbecue. Children welcome. Pets by arrangement but downstairs only.

"....attention to detail to anticipate all our needs."

Mr and Mrs Neilson, Buckinghamshire

**Jane and Jonathan Snodgrass
The Cheese Factory, Gratton,
Bakewell, Derbyshire DE45 1LN
Telephone 01629 650489 Mobile 07866 083551
www.cheesefactory-cottages.co.uk
enquiries@cheesefactory-cottages.co.uk**